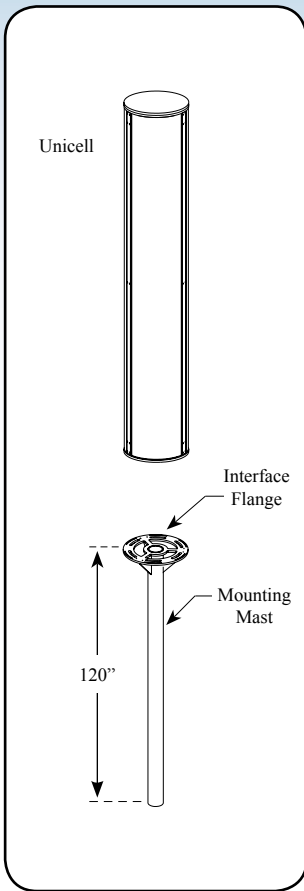


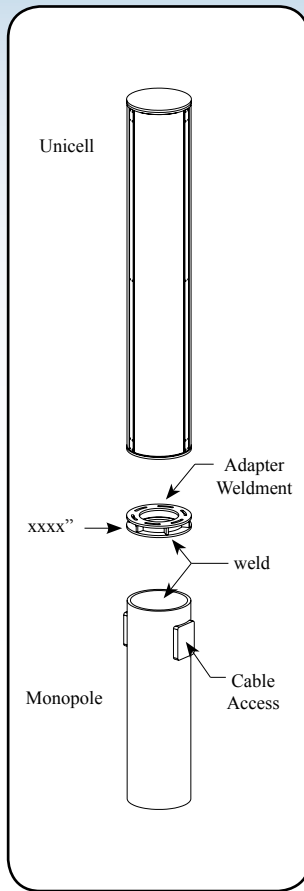
Unicell and Trio Mounting Options



Mounting Mast

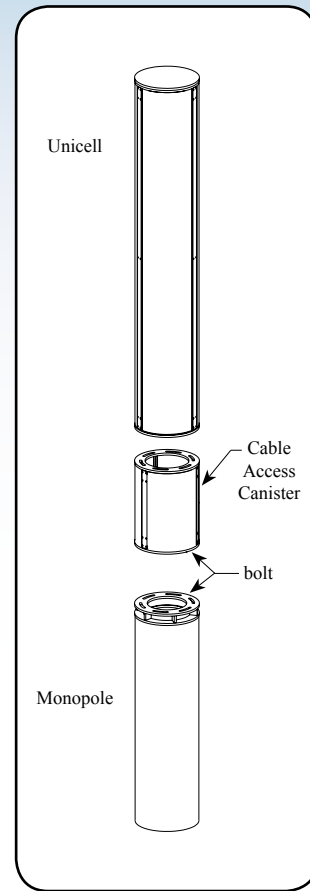
Interface flange welded to a 10-ft. (3048 mm) mast pipe. The assembly is hot dip galvanized for corrosion protection. Custom mast lengths are available upon request.

Mounting Mast	Pipe Dia.	Weight
UNX12-M-120	3.5 in (88.9 mm)	95 lbs (43.2 kg)
UNX14-M-120	3.5 in (88.9 mm)	130 lbs (59.1 kg)
UNX20-M-120	4.0 in (101.6)	135 lbs (61.4 kg)
D3X-M-120	4.0 in (101.6)	133 lbs (60.3 kg)
W3X-M-120	3.5 in (88.9 mm)	59 lbs (26.8 kg)



Adapter Weldment

Custom mounting interface designed by Jaybeam Wireless for monopole sites. The assembly consists of a Unicell mounting flange spaced above a second flange that matches your monopole diameter. This design hides the cables feeding into the Unicell and provides convenient external access to the Unicell flange mounting hardware. Jaybeam Wireless can provide the weldment (or design drawings) directly to your monopole manufacturer to build into the top of your tower.



Cable Access Canister

Same diameter and appearance as the Unicell structure. Steel construction with sections of Unicell radome material to hide feed cable and jumpers. Three large openings provide easy access to the feed cables for installation and weatherproofing.

