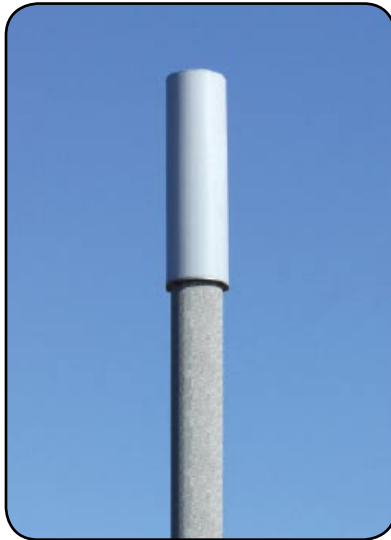


## Unicell 20LT



The **Unicell 20 LT** is a lightweight version of the standard Unicell module. Like the original, the LT series provides a small, low wind load, low visual impact method to conceal base station antennas. By removing the provisions for stacking and removing the requirement that the module support the additional wind load of a flag, Jaybeam Wireless was able to reduce the module weight by almost **45%**! Unicell 20 LT is a perfect solution where co-location is not required or where a flagpole concealment is not necessary.

### ADVANTAGES:

- **Reduced Weight**
- **Lower Cost Solution**

### FEATURES:

- 3-Sectors inside cylindrical enclosure
- Accommodates a wide variety of antennas including:
  - Cellular 800/900 MHz X-Pol
  - PCS 1900 and WideBand 1710-2170 XX-Pol
- Removable radome tube for field access

Mechanical Specifications	
Unicell Model No.:	UNX20-14LT
Diameter of Radome:	20.1 in (511 mm)
Height:	72 in (1829 mm)
Weight (excluding antennas):	96 lbs (43.6 kg)
Antennas Accommodated:	See individual antenna datasheet for Unicell Compatibility
Azimuth Swivel for antenna width <7 in (177mm):	±30° with optional mounting kit
Mechanical Tilt for antenna width <7 in (177mm):	4° with optional mounting kit
Azimuth Swivel for antenna width >7 in (177mm):	No
Mechanical Tilt for antenna width >7 in (177mm):	No
Stackable:	No
Windload @ 100mph (160km/h):	104 lbs (463 N)
Survival Wind:	150 mph (241 km/h)

Electrical Specifications	
Gain Loss through Radome:	<0.4 dB
VSWR:	<1.4:1 Max
Port to Port Isolation:	>28 dB
Sector to Sector Isolation:	>45 dB
Front to Back Ratio:	>25 dB

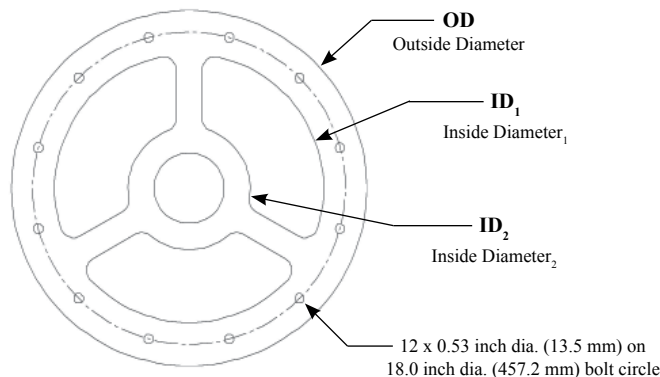
Refer to individual antenna datasheet for all other Electrical Specifications.

Mounting Options and Accessories	
UNX20-M-120	Mounting Mast x 10 ft (3048 mm)
UNX20-P-xxxx <sup>1</sup>	Mounting Plate
UNX20-W-xxxx <sup>2</sup>	Adapter Weldment
UNX20-C	Cable Access Canister
UNX20-TILT	Azimuth / Elevation Tilt Kit
UNX20-RAM	Rear Access Mount
UNX-LPK	Lightning Protection Kit

xxxx<sup>1</sup> = Mounting Plate dia. in inches (i.e.: 20.50" in dia. is UNX20-P-2050)

xxxx<sup>2</sup> = Adapter Weldment dia. in inches (i.e.: 20.50" in dia. is UNX20-W-2050)

### UNICELL FLANGE INTERFACE:



**OD:** 20.50 inches (520.7 mm)

**ID<sub>1</sub>:** 15.50 inches (393.7 mm)

**ID<sub>2</sub>:** 7.05 inches (179.1 mm)