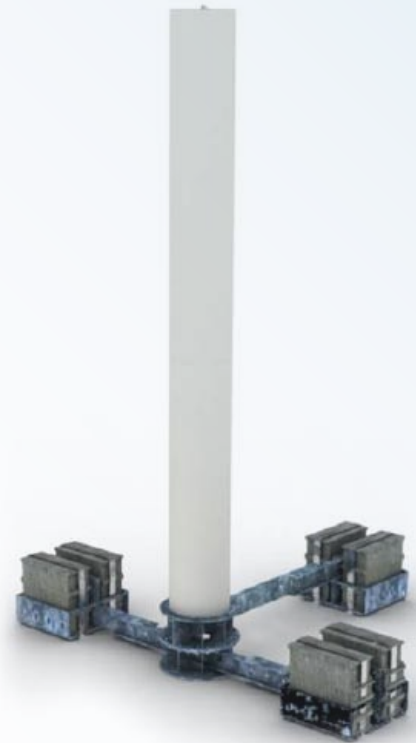


TRIO Roof Top Mounting System

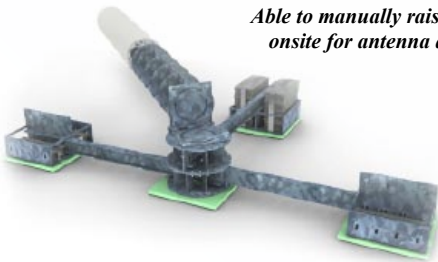
- EASY SITE ACQUISITION
- FAST DEPLOYMENT
- LOW COST SOLUTION

TECHNICAL DETAILS:

- Non-penetrating design.
- Galvanized steel construction.
- Standard 20 kg concrete blocks used for ballast
- Survival wind speed = 200 km/h.
- 3m and 4m standard heights available.
- Light weight design provides low static pressure on the roof.
- 230mm, 310mm and 380mm dia. designs available to match TRIO dia.
- TRIO able to rotate 360° at the mast interface for sector alignment.
- Tools available to manually raise / lower the mast on-site.
- Cylindrical shroud covers the mounting mast for a clean, uniform appearance.



Able to manually raise / lower onsite for antenna access.



EASY SITE ACQUISITION:

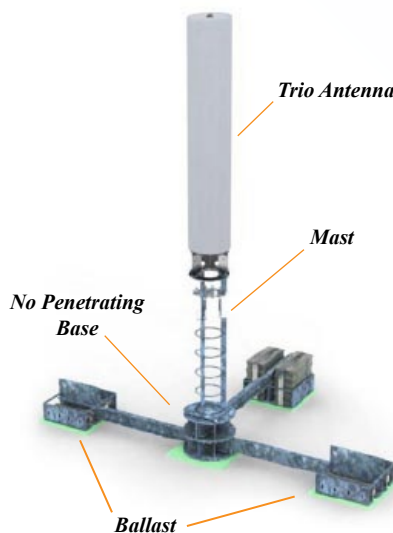
- Small diameter with uniform appearance provides low visual impact.
- No building modifications required.
- No visible cables, antennas or amplifiers from ground level.

FAST DEPLOYMENT:

- No building modifications to schedule or coordinate.
- Mount breaks down into small, man portable components for easy transport.
- Low parts count for quick on-site assembly.

LOW COST SOLUTION:

- Standardized design = reduced engineering costs.
- No building modifications = lower material and labor costs.
- No crane required to install = lower installation costs.
- Quick installation = lower labor costs.
- Single part number for system = lower logistical costs.



For additional information, please contact Jaybeam Wireless customer service.