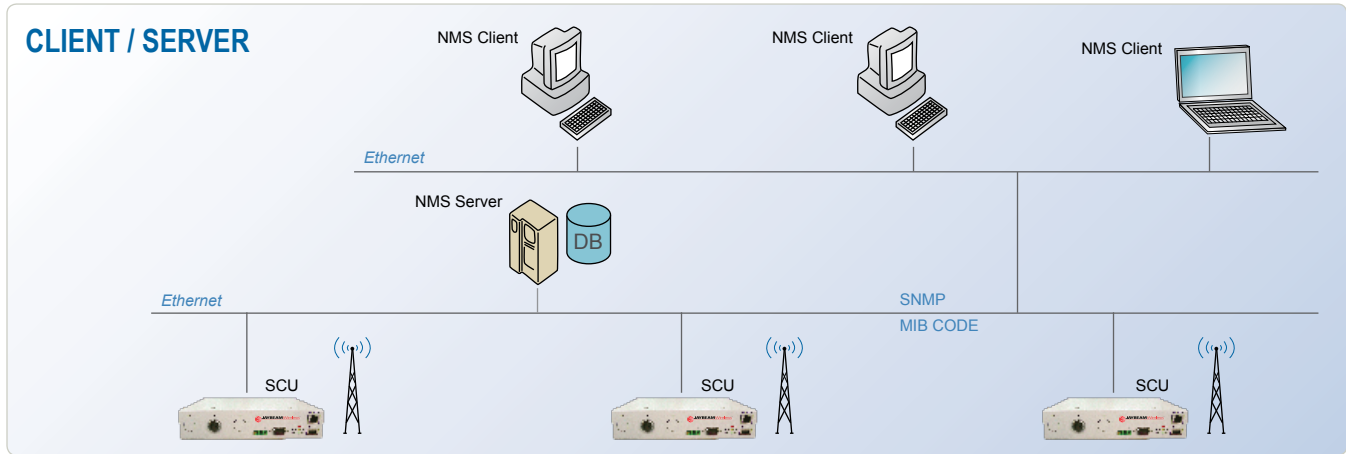


Network Management System (NMS)



OVERVIEW

Network Management System (NMS) software from Jaybeam Wireless enables operators to remotely control and monitor AISG devices distributed throughout their network. Engineers using NMS software communicate via Ethernet to Site Control Units (SCU's) at each cell site to send and receive commands to RET, RAS, TMA and any other installed AISG devices. The system includes a user friendly alarm interface to manage error messages and network connectivity problems as well as provides a centralized database for site configuration data.

FEATURES

- **Remote Site Control**
 - Change the electrical tilt or azimuth bearing of installed RET / RAS antennas.
 - Remotely calibrate or re-configure installed devices.
- **Batch Scheduling**
 - Quickly reconfigure a large number of sites for seasonal changes or event optimization.
 - Schedule site polling to update control database.
- **Remote Site Monitoring**
 - Monitor and report device alarms.
 - Monitor and report network connectivity issues.
- **Alarm Management**
 - User friendly interface to receive and interpret error messages.
 - Able to assign severity levels to each defined error code.
 - Alarm filtering by area, time or severity level.
- **Site History**
 - Alarm history
 - Site change history
- **Site Configuration**
 - Site name, location, GPS coordinates.
 - Store and maintain listing of installed equipment.
 - Store site access procedures / protocols.
 - Maintain internal and external contact information.
- **Site Management**
 - Add new sites or remove existing sites.
 - Maintain and communicate site status.
 - Assign logical grouping by Region, Area, City, etc.
- **User Management**
 - Add / Delete users to the system.
 - Assign and manage access privileges.
 - Assign and manage user passwords.
- **Reporting**
 - Query database and filter results to quickly review desired data.
 - Produce formatted reports showing Site information, Tilt changes, Etc.
 - Export data to EXCEL for additional processing.

SUGGESTED SYSTEM

Server	Intel P4 2.8 GHz CPU, 1GB DDR RAM, 80GB Hard Drive, 100BaseT Ethernet
Client	Intel P4 2.8 GHz CPU, 256MB DDR RAM, 40GB Hard Drive, 100BaseT Ethernet, Desktop or Laptop
Server OS	Linux or Windows 2000, XP or later
Client OS	Linux or Windows 2000, XP or later
JVM (Java Environment)	J2sdk 1.4 or above

Please visit our website at www.jaybeamwireless.com.

FRANCE:
 Z.1. de la Boitardiere
 Chemin du Roy
 37400 Amboise - France
 Telephone: +33-2-47-30-69-70

UNITED KINGDOM:
 Rutherford Drive, Park Farm South
 Wellingborough, Northamptonshire
 NN8 6AX – United Kingdom
 Telephone: +44-1933-408408

UNITED STATES:
 730 21st Street Drive, SE
 Hickory, North Carolina
 28602 - United States
 Telephone: +1-828-324-6971 x302