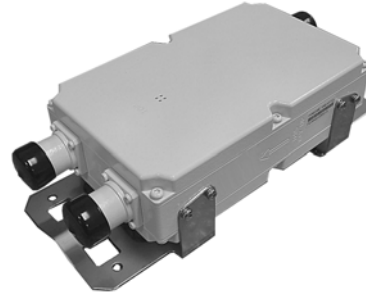


DPX-001

806-960 / 1710-2170 MHz Crossband Diplexer

- Covers CDMA800/CDMA850/GSM900 and GSM1800/PCS1900/UMTS2100 bands
- Used for feeder combining (near BTS) or feeder splitting (near antenna)
- Low insertion loss, high power, low PIM
- Small size, easy to install
- Options for bypassing DC and RET (AISG) signals
- Suited to outdoor use (weatherproof to IP65)
- Single or dual configurations available
- High levels of lightning protection



TECHNICAL CHARACTERISTICS

Port 1 Channel (800/900)

Passband	806 - 960 MHz
Insertion Loss	0.1 dB typ, 0.15 dB max
Return Loss (Port 1, Port 3)	20 dB min
Rejection 1710 - 2170 MHz	60 dBc min
Power Handling	500 W avg, 20 kW PIP
Intermodulation (IM2, IM3)	155 dBc min, 2x 20 W carriers

Port 2 Channel (1800/1900/2100)

Passband	1710 - 2170 MHz
Insertion Loss	0.2 dB typ, 0.3 dB max
Return Loss (Port 2, Port 3)	20 dB min
Rejection 806 - 960 MHz	50 dBc min
Power Handling	500W avg, 6 kW PIP
Intermodulation (IM2, IM3)	155 dBc min, 2x 20 W carriers

Isolation (Port 1 to 2, Port 2 to 1)

1710 - 2170 MHz	60 dBc min
806 - 960 MHz	50 dBc min

Impedance

50 ohm

Operating Temperature

-40 to +65 °C

DC/AISG Pass

Common port to high band port.
(other configuration are possible - contact us)

Max DC current

3 A

Connectors

DIN 7/16 (f) x3 (extended shank type)

Dimensions

216 x 132 x 62 mm

Weight

4 kg max

Environmental Protection

IP65 (with moisture release system), IP67 connectors

Lightning Protection

±10 kA using 8/20us pulse (5 strikes)

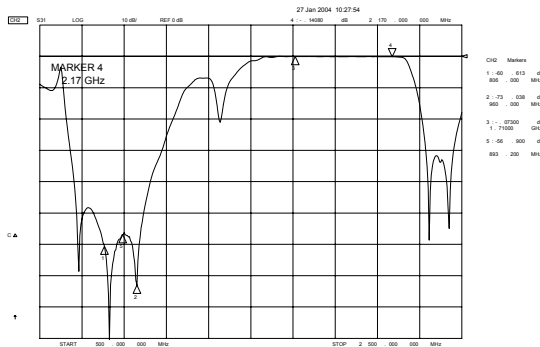
Finish

Paint with very high salt-spray resistance

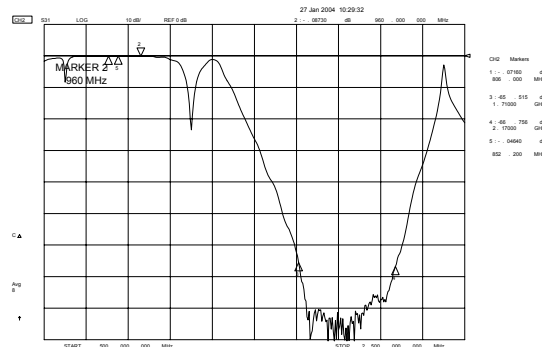
MTBF

500,000 hours min

TYPICAL RESPONSE CURVES



1710-2170 MHz Passband 806-960 MHz Rejection



806-960 MHz Passband 1710-2170 MHz Rejection

DPX-001

806-960 / 1710-2170 MHz Crossband Diplexer

INSTALLATION

DPX-001 is delivered with a wall/pole mounting bracket with a Quick Release metal clamp for 45-178mm diameter poles

Optional: a double unit wall/pole mounting bracket kit is available. Contact us.

MECHANICAL

