

## MKS02P01

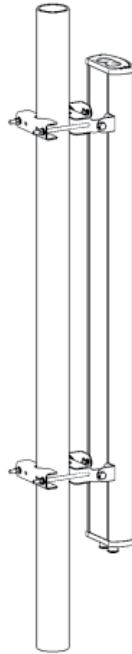
### Pole Mounting Kit

#### ANTENNA TYPE:

- PCSA V-Pol
- PCSX X-Pol
- W65 X-Pol
- W85 X-Pol
- B800A V-Pol
- V90 DualBand
- DPV90 DualBand

#### FEATURES:

- To fit 2 - 4.5 inch (40 - 115 mm) diameter pole
- Distance between rear of antenna and pole: 3.9 inches (100 mm)



## MKS02T06

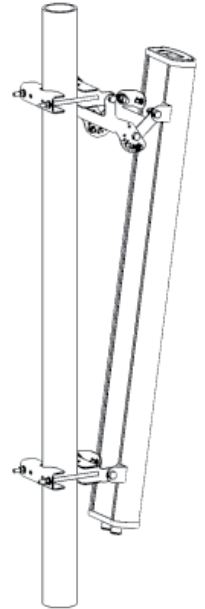
### Scissor Tilt Mounting Kit

#### ANTENNA TYPE:

- PCSA V-Pol
- PCSX X-Pol
- W65 X-Pol
- W85 X-Pol

#### FEATURES:

- To fit 2 - 4.5 inch (40 - 115 mm) diameter pole
- 0 - 12° Mechanical Tilt at 39 in (1 meter) bracket spacing
- 0 - 6° Mechanical Tilt at 67 in (1.7 meter) bracket spacing
- Distance between rear of antenna and pole: 3.9 inches (100 mm)



## MKS02T07

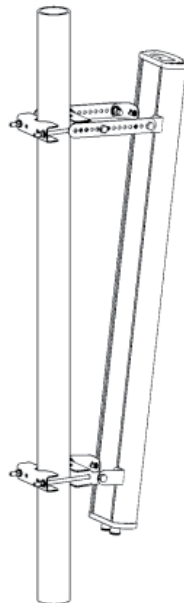
### Bar Tilt Mounting Kit

#### ANTENNA TYPE:

- PCSA V-Pol
- PCSX X-Pol
- W65 X-Pol
- W85 X-Pol

#### FEATURES:

- To fit 2 - 4.5 inch (40 - 115 mm) diameter pole
- 0 - 12° Mechanical Tilt at 39 in (1 meter) bracket spacing
- 0 - 6° Mechanical Tilt at 67 in (1.7 meter) bracket spacing
- Distance between rear of antenna and pole: 4.9 inches (125 mm)



## MKS02T08

### Extended Scissor Tilt Mounting Kit

#### ANTENNA TYPE:

- B800A V-Pol
- V90 DualBand
- DPV90 DualBand

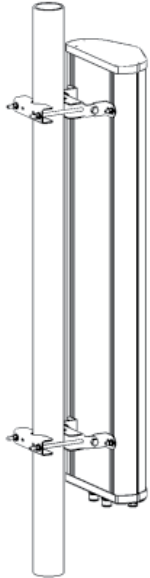
#### FEATURES:

- To fit 2 - 4.5 inch (40 - 115 mm) diameter pole
- 0 - 19° Mechanical Tilt at 39 in (1 meter) bracket spacing
- 0 - 12° Mechanical Tilt at 67 in (1.7 meter) bracket spacing
- Distance between rear of antenna and pole: 3.9 inches (100 mm)



## MKS04P01

### Pole Mounting Kit



#### ANTENNA TYPE:

- X65 Dualband & Tri Band
- PCSX033
- V65 DualBand
- SLX X-Pol
- DPX065 DualBand
- PCSX085 XX-Pol
- B800X X-Pol
- WWT65 XX-Pol
- DPV065 DualBand
- DSX065 DualBand

#### FEATURES:

- To fit 2 - 4.5 inch (40 - 115 mm) diameter pole
- Distance between rear of antenna and pole: 3.9 inches (100 mm)

## MKS04T02

### Scissor Tilt Mounting Kit



#### ANTENNA TYPE:

- PCSX033
- PCSX085 XX-Pol
- WWT65 XX-Pol

#### FEATURES:

- To fit 2 - 4.5 inch (40 - 115 mm) diameter pole
- 0 - 12° Mechanical Tilt at 39 in (1 meter) bracket spacing
- 0 - 6° Mechanical Tilt at 67 in (1.7 meter) bracket spacing
- Distance between rear of antenna and pole: 3.9 inches (100 mm)

## MKS02P02

### Off-Set Pole Mounting Kit



#### ANTENNA TYPE:

- PCSA V-Pol
- PCSX X-Pol

#### FEATURES:

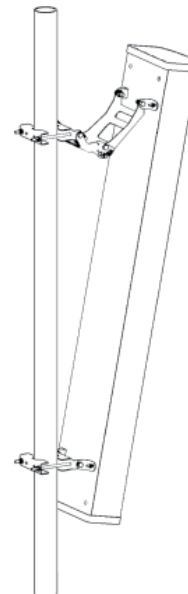
- To fit 2 - 4.5 inch (40 - 115 mm) diameter pole
- Antenna offset relative to pole to provide clear access to rear mounted RF connectors
- Distance between rear of antenna and pole: 4.9 inches (125 mm)

#### ALSO AVAILABLE:

- **MKS02T09** - Offset Scissor Tilt Kit
- **MKS02T10** - Offset Bar Tilt Kit
- **MKS02T11** - Offset Extended Scissor Tilt Kit

## MKS04T03

### Extended Scissor Tilt Mounting Kit



#### ANTENNA TYPE:

- X65 Dualband & Tri Band
- DPX065 DualBand
- V65 DualBand
- DSX065 DualBand
- SLX X-Pol
- B800X X-Pol
- DPV065 DualBand

#### FEATURES:

- To fit 2 - 4.5 inch (40 - 115 mm) diameter pole
- 0 - 19° Mechanical Tilt at 39 in (1 meter) bracket spacing
- 0 - 12° Mechanical Tilt at 67 in (1.7 meter) bracket spacing
- Distance between rear of antenna and pole: 3.9 inches (100 mm)

## MKS05P01

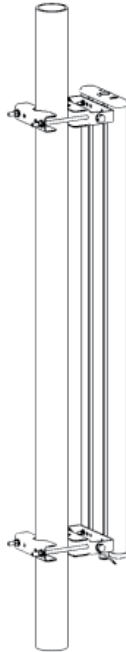
### Pole Mounting Kit

**ANTENNA TYPE:**

- PCSS V-Pol
- WBX033 X-Pol
- WBX045 X-Pol
- WBX065 X-Pol
- WBX065T XX-Pol

**FEATURES:**

- To fit 2 - 4.5 inch (40 - 115 mm) diameter pole
- Distance between rear of antenna and pole: 3.9 inches (100 mm)



## MKS05T03

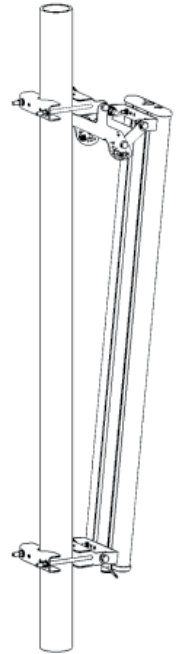
### Scissor Tilt Mounting Kit

**ANTENNA TYPE:**

- PCSS V-Pol
- WBX033 X-Pol
- WBX045 X-Pol
- WBX065 X-Pol
- WBX065T XX-Pol

**FEATURES:**

- To fit 2 - 4.5 inch (40 - 115 mm) diameter pole
- 0 - 12° Mechanical Tilt at 39 in (1 meter) bracket spacing
- 0 - 6° Mechanical Tilt at 67 in (1.7 meter) bracket spacing
- Distance between rear of antenna and pole: 3.9 inches (100 mm)



## MKS05T04

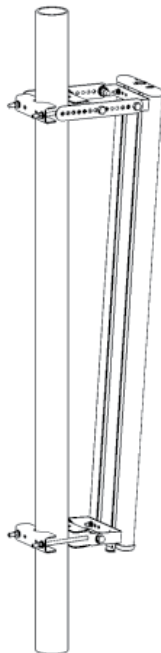
### Bar Tilt Mounting Kit

**ANTENNA TYPE:**

- PCSS V-Pol
- WBX033 X-Pol
- WBX045 X-Pol
- WBX065 X-Pol
- WBX065T XX-Pol

**FEATURES:**

- To fit 2 - 4.5 inch (40 - 115 mm) diameter pole
- 0 - 12° Mechanical Tilt at 39 in (1 meter) bracket spacing
- 0 - 6° Mechanical Tilt at 67 in (1.7 meter) bracket spacing
- Distance between rear of antenna and pole: 4.9 inches (125 mm)



## MKS05T05

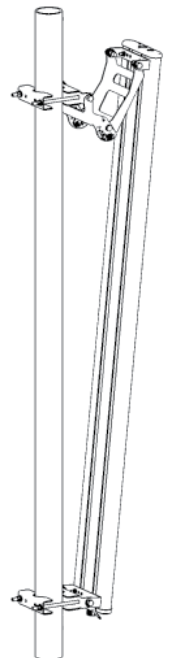
### Extended Scissor Tilt Mounting Kit

**ANTENNA TYPE:**

- PCSS V-Pol
- WBX033 X-Pol
- WBX045 X-Pol
- WBX065 X-Pol
- WBX065T XX-Pol

**FEATURES:**

- To fit 2 - 4.5 inch (40 - 115 mm) diameter pole
- 0 - 19° Mechanical Tilt at 39 in (1 meter) bracket spacing
- 0 - 12° Mechanical Tilt at 67 in (1.7 meter) bracket spacing
- Distance between rear of antenna and pole: 3.9 inches (100 mm)



## MKS07P01

### Pole Mounting Kit



**ANTENNA TYPE:**

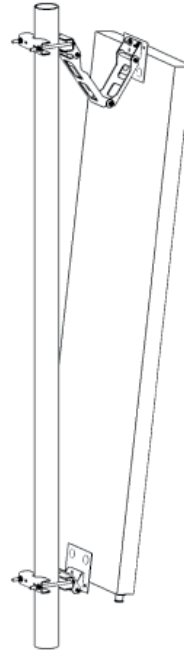
- WBX018

**FEATURES:**

- To fit 2 - 4.5 inch (40 - 115 mm) diameter pole
- Distance between rear of antenna and pole: 1.0 inch (25 mm)

## MKS07T01

### Extended Scissor Tilt Mounting Kit



**ANTENNA TYPE:**

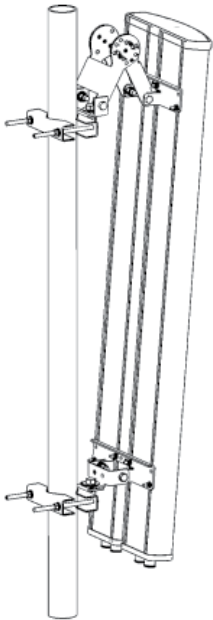
- WBX018

**FEATURES:**

- To fit 2 - 4.5 inch (40 - 115 mm) diameter pole
- 0 - 10° Mechanical Tilt at 67 in (1.7 meter) bracket spacing
- Distance between rear of antenna and pole: 3.3 inch (83 mm)

## XSL53864

### Scissor Tilt Mounting Kit



**ANTENNA TYPE:**

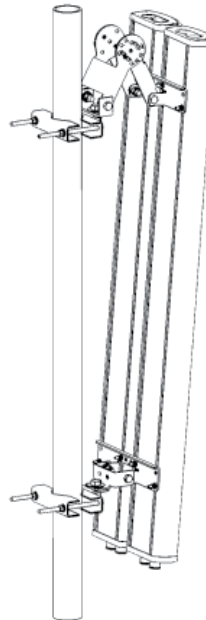
- PCSX060 XX-Pol (*all lengths*)
- PCSA V-Pol
- PCSX X-Pol
- W65 X-Pol
- W85 X-Pol

**FEATURES:**

- To fit 2 - 4.5 inch (40 - 115 mm) diameter pole
- ±45° Pan
- 0 - 12° Mechanical Tilt at 39 in (1 meter) bracket spacing
- Distance between rear of antenna and pole: 5.5 inch (140 mm)

## XSL55837

### Quad-Pol Mounting Kit



The Quad-Pol Mounting Kit allows (2) standard PCSX065 cross polarized antennas to be mounted side-by-side on a common pipe mount.

**ANTENNA TYPE:**

- PCSX065 XX-Pol (*all lengths*)
- PCSX085 X-Pol

**FEATURES:**

- To fit 2 - 4.5 inch (40 - 115 mm) diameter pole
- ±45° Pan
- 0 - 12° Mechanical Tilt at 39 in (1 meter) bracket spacing
- Distance between rear of antenna and pole: 5.5 inches (140 mm)

**ALSO AVAILABLE:**

- **505-175-5-001**  
QuadPol Bracket Kit  
(For use with an existing XSL53864)