

FEATURED PRODUCTS OVERVIEW



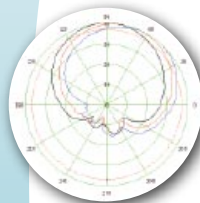
SLIMLINE MULTI-BAND ANTENNAS

- Small size: 255 mm wide x 146 mm deep
- Low wind load, Low visual impact
- Dual Band and Tri-Band models available
- Internal, extractable RET module



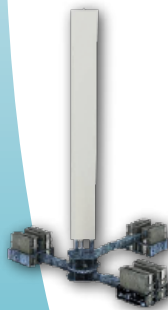
UMTS 900 ANTENNAS & COMBINERS

- Embedded 900 Mhz TMA and Combiner for antenna sharing between GSM 900 and UMTS 900 signals
- Low visual impact solutions offering maximum RF performance
- Stand alone active combiner available for use with standard GSM antennas



REMOTE AZIMUTH STEERING (RAS) ANTENNAS

- Wideband 1710-2170 MHz antenna
- $\pm 30^\circ$ remote mechanical steering in horizontal plane
- Remote electrical tilt in vertical plane
- Low wind load, cylindrical radome design
- Able to control with standard AISG v1.1 controllers



TRIO™ TRI-SECTOR SOLUTIONS

- Low visual impact site solutions
- Small diameters - 230mm, 310mm, & 380mm
- Wideband, Dual-band, and Tri-band solutions
- $\pm 15^\circ$ Variable Azimuth Panning option available
- Non-penetrating Roof-Top Mounting System



EMBEDDED LNA ANTENNA

- Custom designed filters and amplifiers to fit inside standard antenna outline
- Improved system gain over external TMA configuration
- AISG compliant internal amplifiers and RET
- Also compatible with non-AISG equipped sites
- Lower visual impact and reduced wind load



WiMAX ANTENNAS

- 2.5 GHz, 3.5 GHz, 5.7 GHz designs
- Remote Electrical Tilt capability
- Directional and Omnidirectional antennas available

www.jaybeamwireless.com

FRANCE:

Z.I. de la Boitardiere
Chemin du Roy
37400 Amboise - France
Telephone: +33-2-47-30-69-70

UNITED KINGDOM:

Rutherford Drive, Park Farm South
Wellingborough, Northamptonshire
NN8 6AX - United Kingdom
Telephone: +44-1933-408408

UNITED STATES:

730 21st Street Drive, SE
Hickory, North Carolina
28602 - United States
Telephone: +1-828-324-6971 x302